

Bildnachweis: Stockportal © phontalaphoto

International Tech Talks

Artificial Intelligence in Bavaria and Northern Europe



With:





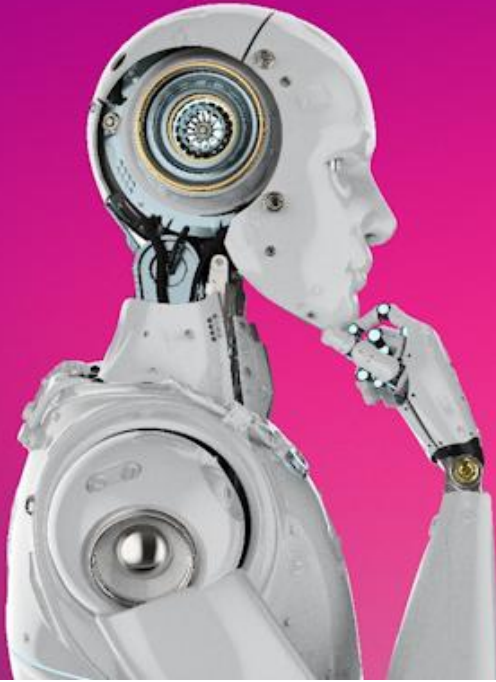
Prof. Dagmar Schuller

Vice President

Chamber of Commerce and Industry for
Munich and Upper Bavaria



WELCOME NOTE



The State of Digitalisation in Bavarian Companies

International Tech Talks



Degree of Digitalisation by sector

Degree of Digitisation by sector

Bavaria 2024; 1 = very good to 6 = insufficient

Industry 2.9



↗ Previously 3.0

Construction 2.9



↗ Previously 3.1

Commerce 3.1



→ Previously 3.1

Transport 3.3



↘ Previously 3.1

Hospitality 2.8



→ Previously 2.8

ICT Sector 2.1



→ Previously 2.1

Finance 2.5



↗ Previously 2.6

Other 2.9



→ Previously 2.9

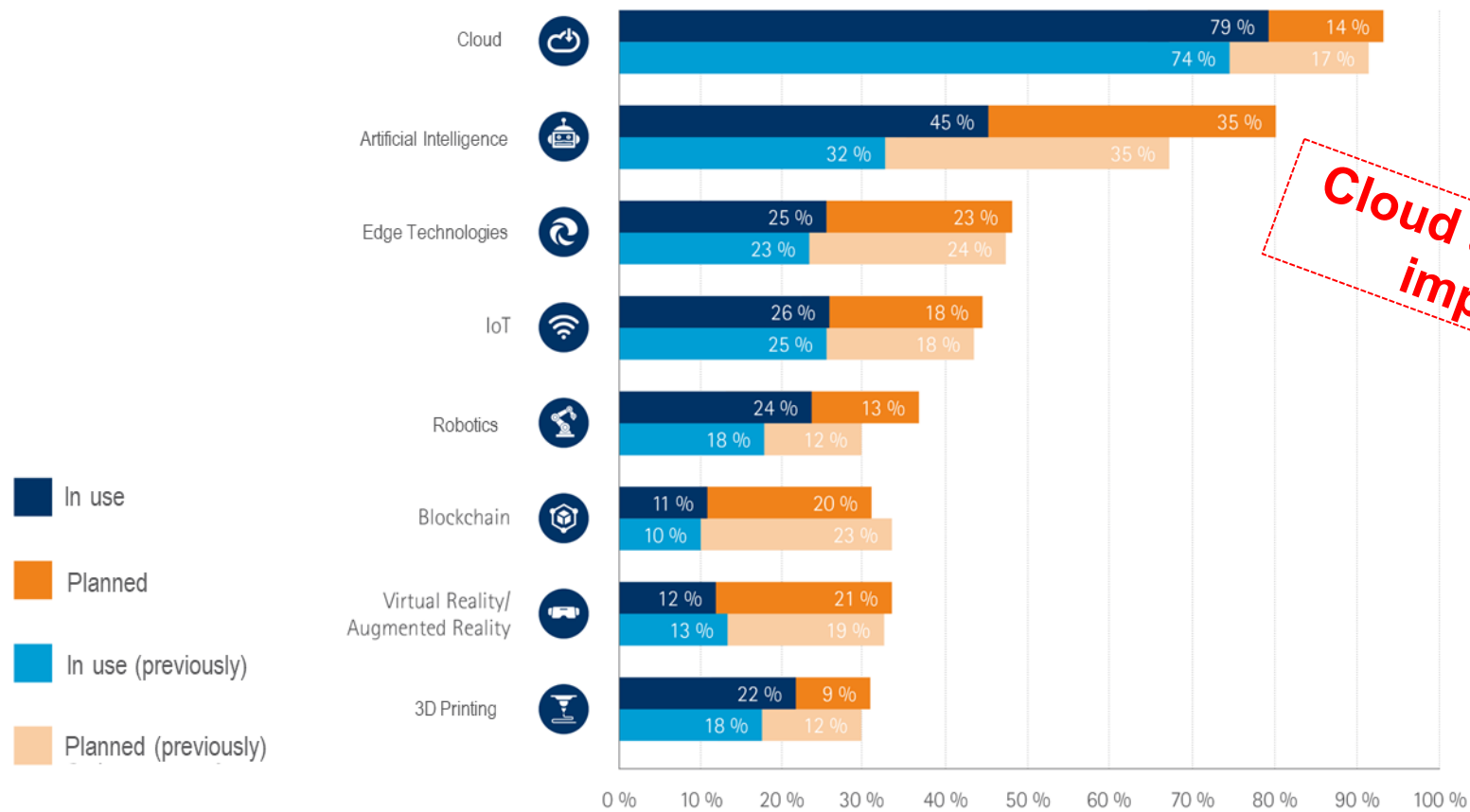
Overall 2.8



→ Previously 2.8

Degree of digitalisation is stagnating

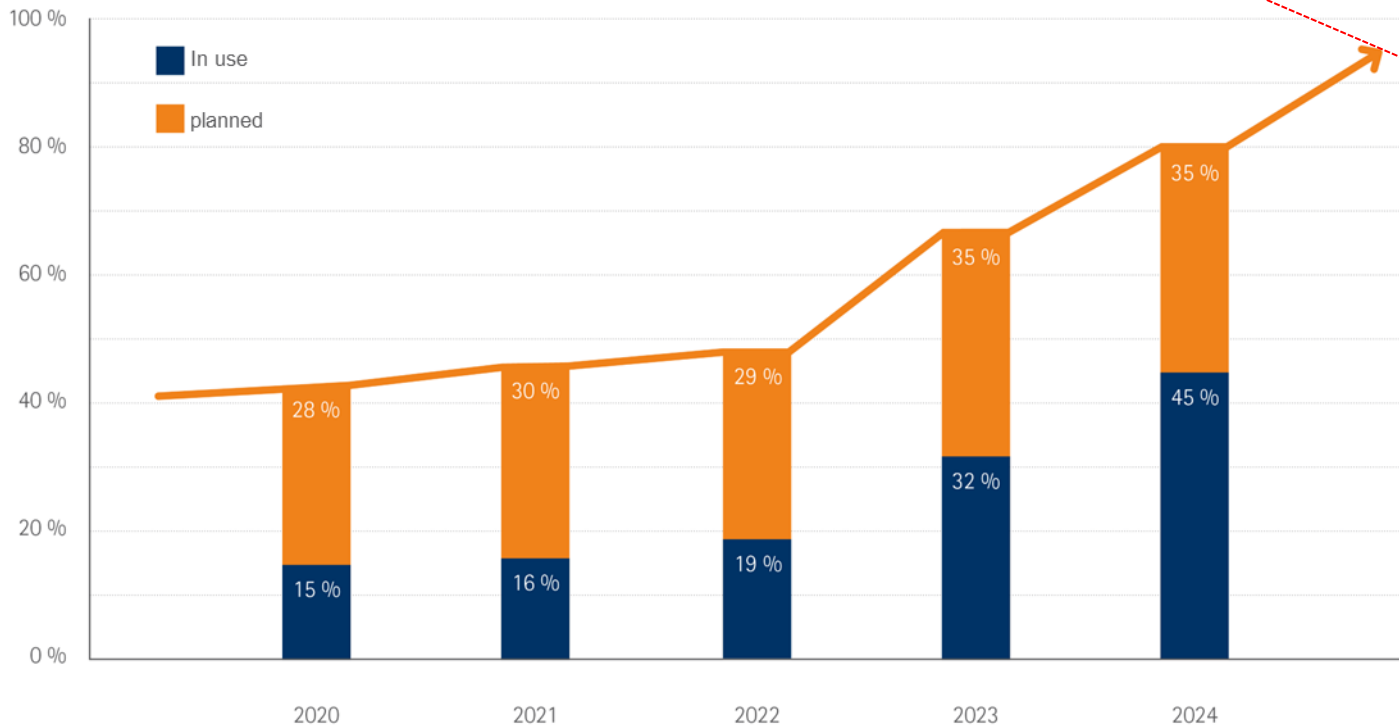
Technologies used within companies



Do you use AI/ML in your company or are you planning to use it within the next three years?

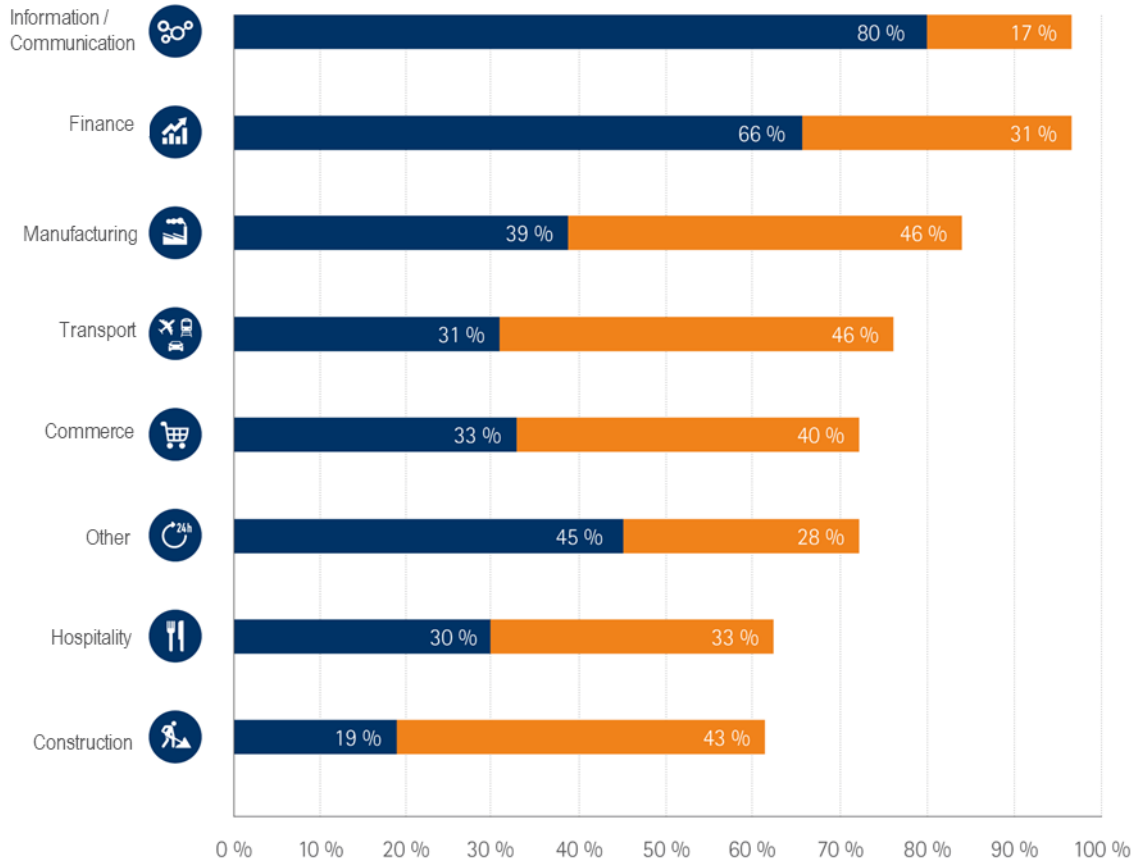
Development of the AI use in companies from 2020 to 2024

Bavaria 2024



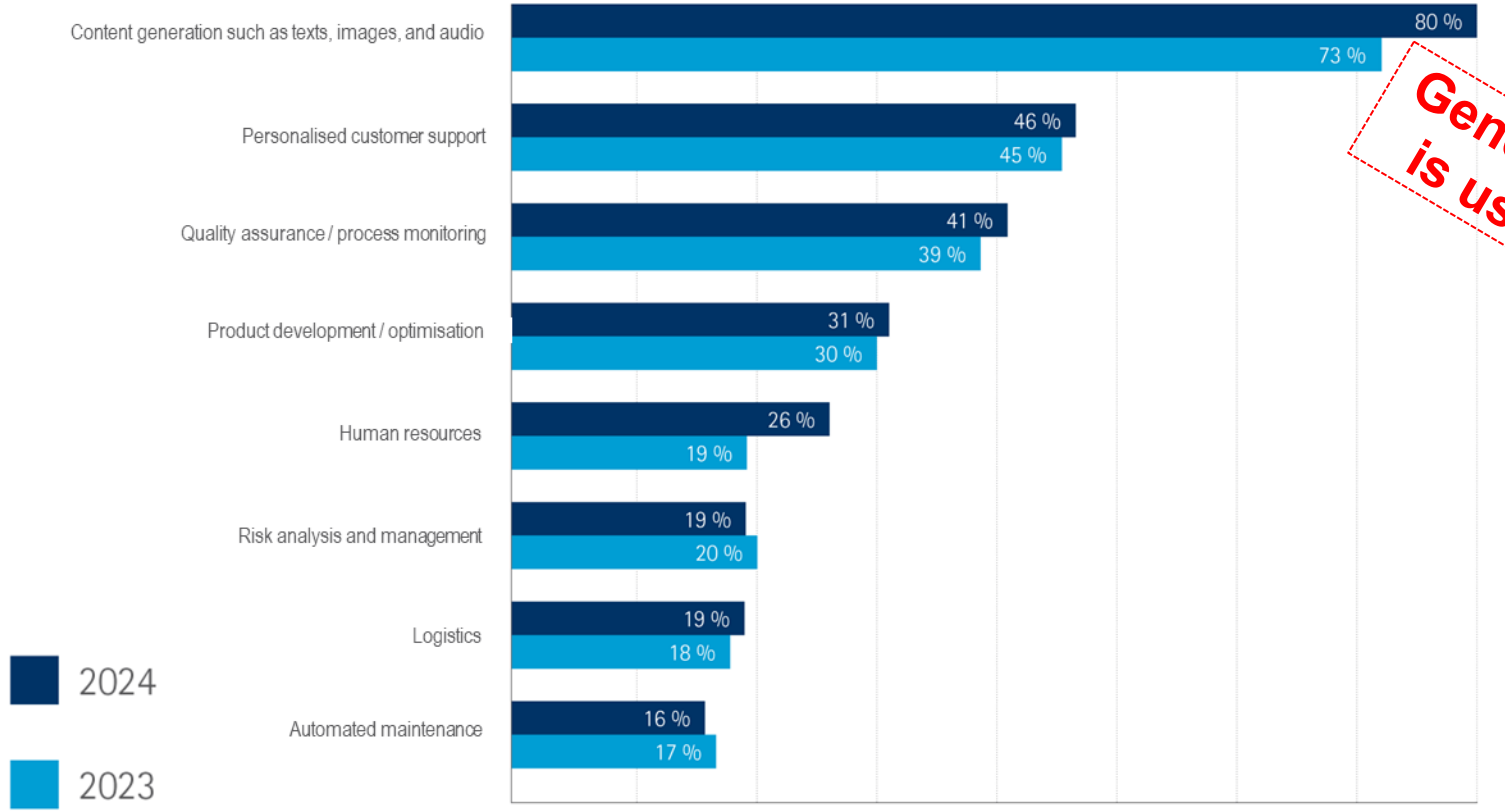
AI surge unabated since 2023

AI use within companies by sector



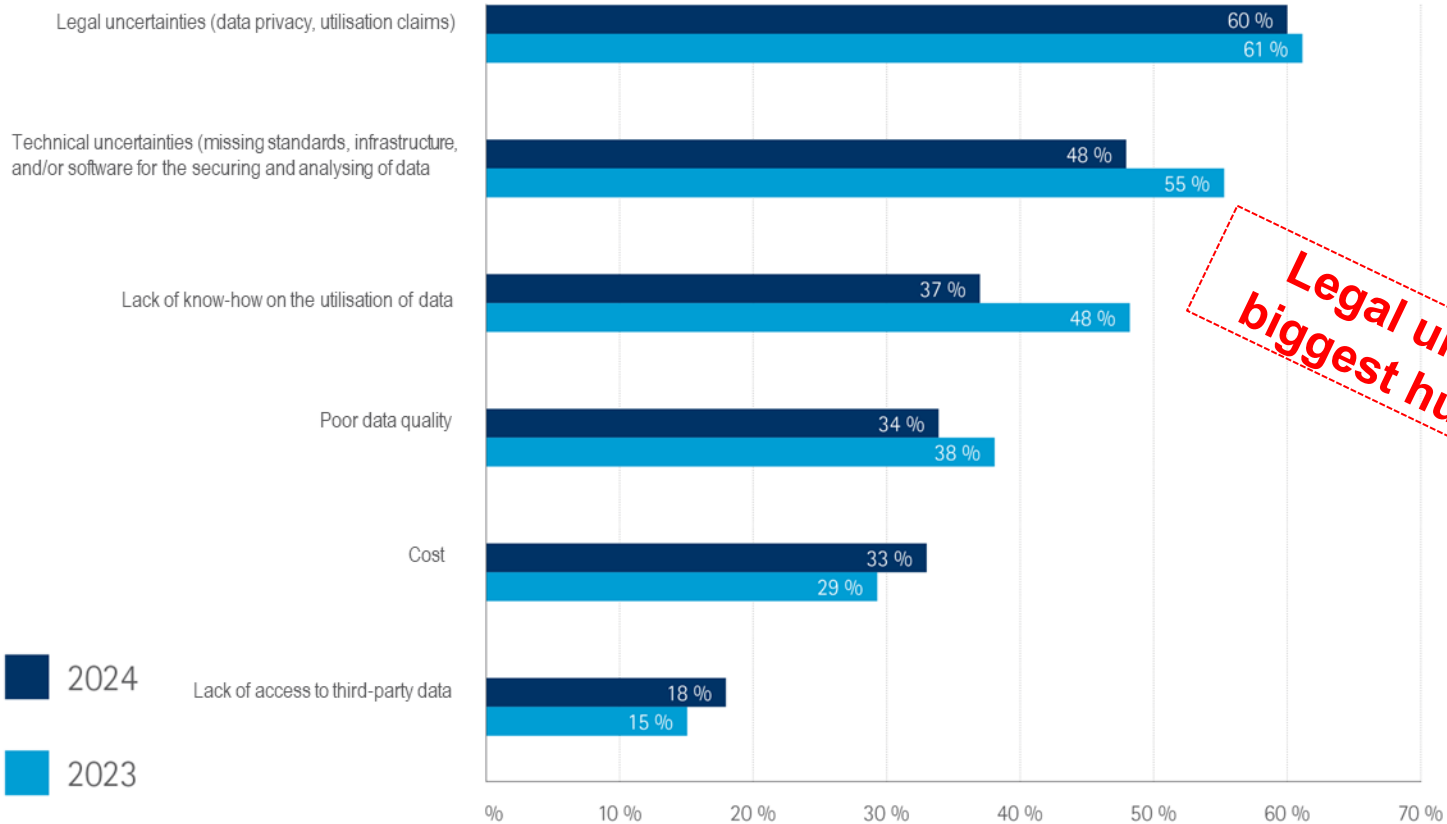
ICT sector uses AI the most

Fields of application of AI in companies



General purpose AI is used above all

Biggest challenges for companies when using data



Legal uncertainties are the biggest hurdle for data usage

ifo-Study: AI in Europe

- Germany ranks 7th in EU comparison
- Barriers
 - Lack of skills
 - High costs
 - Data protection
 - Legal uncertainties
 - Availability of data
- Build up AI expertise
- Supports SMEs and Start-Ups
- Create a clear legal framework

Esp. in Germany



More information:



www.ihk-muenchen.de/
IHK-Digitalisierungsumfrage

**Künstliche Intelligenz (KI):
Verbreitung, Anwendungen und Hindernisse
in Deutschland im europäischen Vergleich**

ifo-Studie im Auftrag der IHK für München und Oberbayern



#togAlther





 ihk-muenchen.de/newsletter

A close-up, profile view of a white, futuristic-looking artificial intelligence head or robot face, looking upwards and to the right. The head has large, expressive eyes and a smooth, metallic texture.

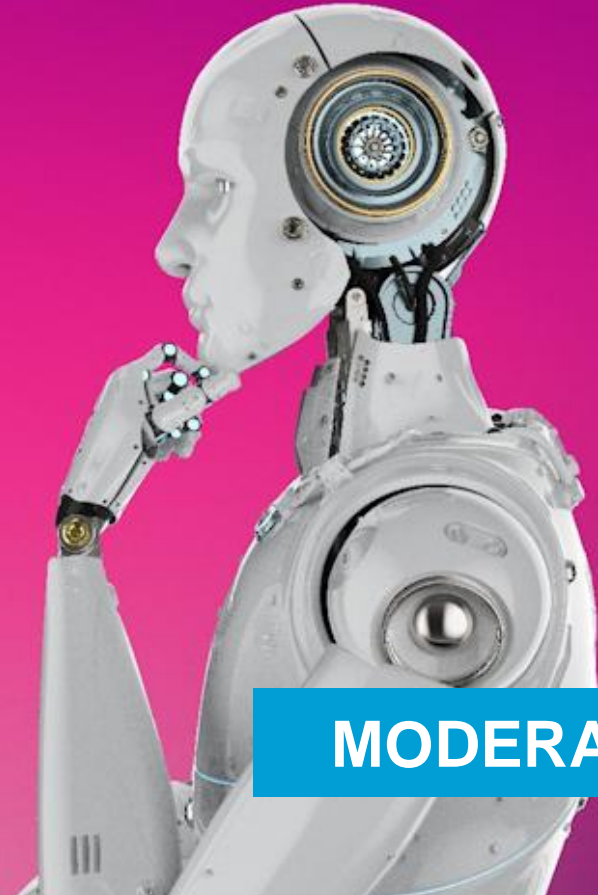
**IHK-
NEWSLETTER
STAY
INFORMED**



Johannes Weidl

Deputy Head of Unit Internationalisation

Chamber of Commerce and Industry for
Munich and Upper Bavaria



MODERATION

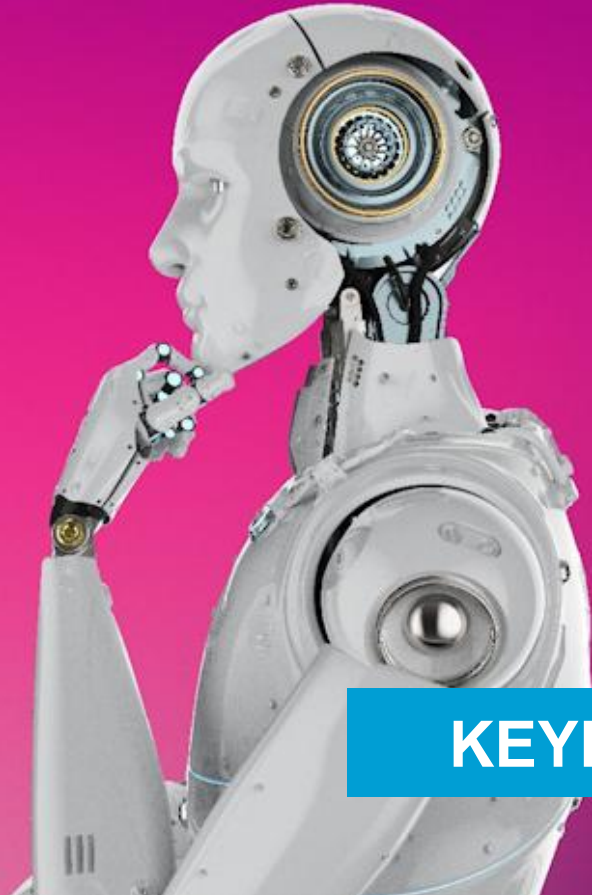


Andrea Martin

CTO Ecosystem & Associations DACH, Leader

IBM Watson Center Munich

AI Advisory Board Member of the Free State of Bavaria



KEYNOTE

Andreas Wenzel
AHK Denmark, CEO



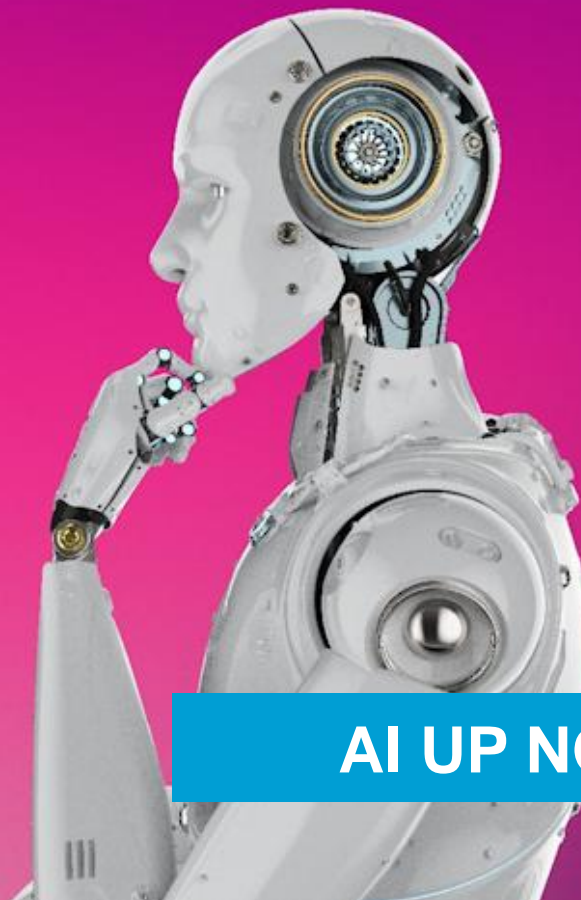
Malin Johansson
AHK Sweden, Head
of Communication



Kristina Schmidt
AHK Norway, Advisor



German Chambers of Commerce Abroad (AHK)



AI UP NORTH

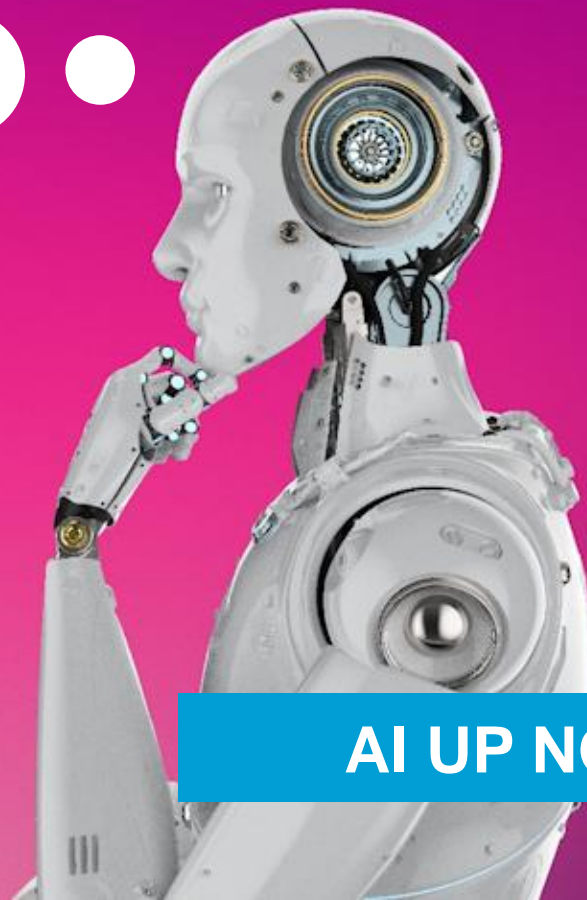


HOT

TRENDING



**SOME-
THING
NOBODY
KNOWS**



AI UP NORTH



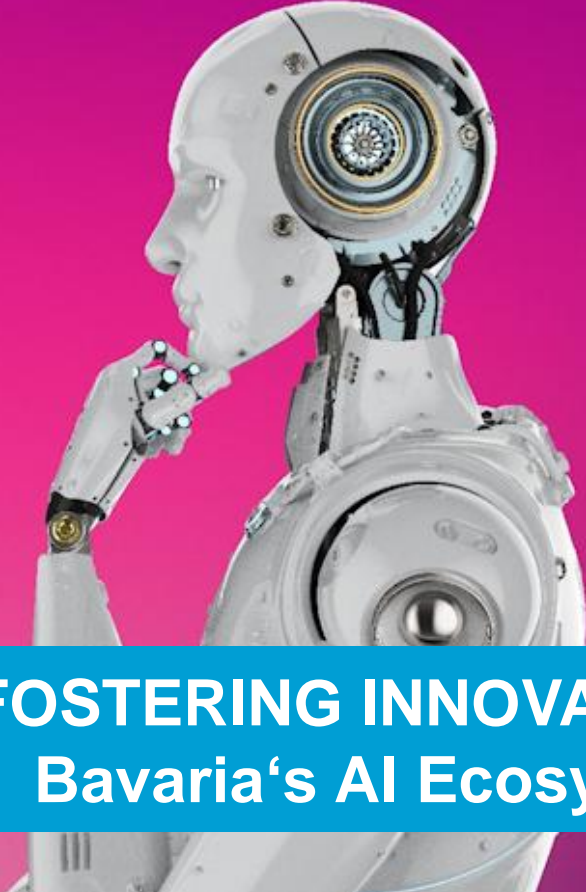
Andreas Preißer

Head of Business Relations

BAIOSPHERE – Bavarian AI Agency



FOSTERING INNOVATION
Bavaria's AI Ecosystem



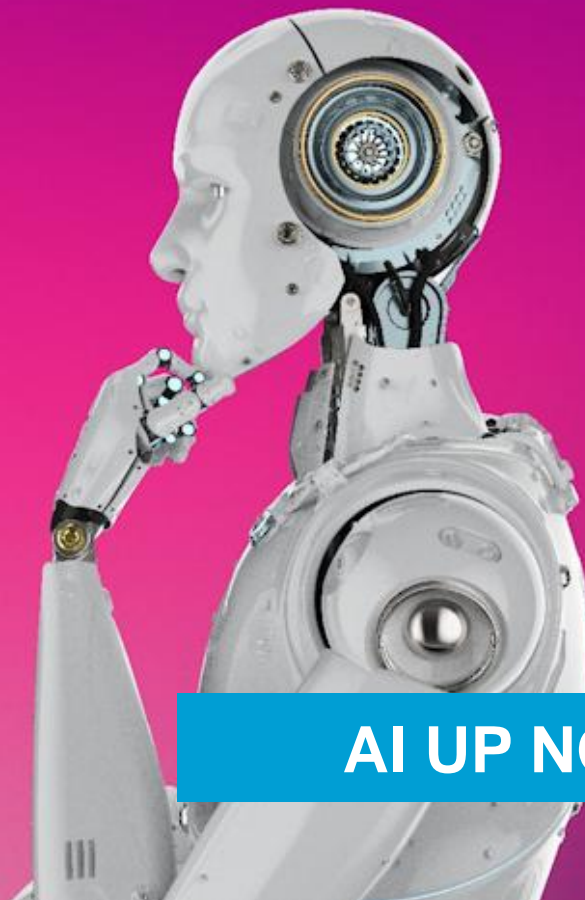
Dominic Otto
AHK Baltics, Deputy
Managing Director



Jan Feller
AHK Finland, CEO



German Chambers of Commerce Abroad (AHK)

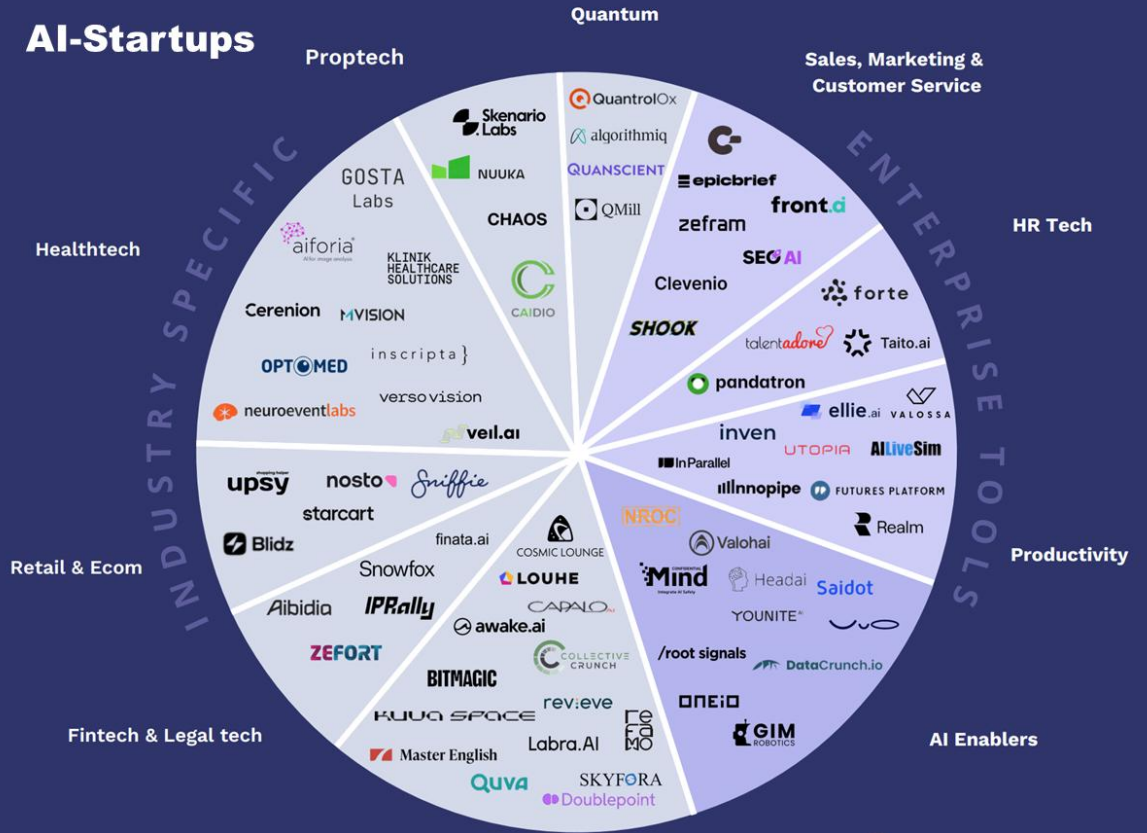


AI UP NORTH



BALTICS

AI-Startups



ICEYE

SMARTLY

DIGITAL WORKFORCE™

Nightingale Health

BETOLAR

VAFJO

RELEX

AI-native Scaleups and listed AI-startups

Linear

FabricAI.

LUMOA PART OF MEDIGATE

SILO AI

Combinostics

Flowrite

CUBICASA

Speechly

KLEUV

Acquired/ majority of ownership outside Finland

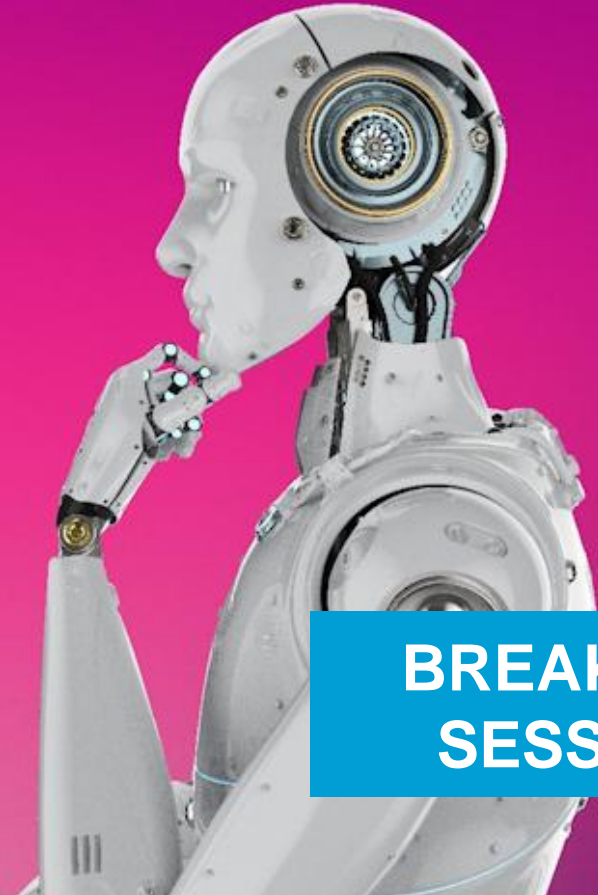
FINLAND

Industry
Börsensaal

Service Sector
Maffeisaal

E-Government
Clubraum

Start: 12:00 pm, upstairs



**BREAKOUT
SESSIONS**

Startup Pitch Session

13:45 – 14:00 Uhr, Atrium



COMING UP